

Online THT AOI

AIS 203X-HW

Application Pre wave soldering

- ✓ Strong inspection of fuzzy features, easy and quick programming
- ✓ Intelligent parameter adjustment
- ✓ Easy installation across production line



CORE TECHNOLOGY

Intelligent parameter adjustment

Auto-identify components to match inspection algorithm. Intelligent adjustment of parameters to speed up programming

AI training tool

Model self-training for special components, reduce false positive rate by continuous learning to improve inspection accuracy

Support both online/offline programming

Online/remote offline programming, without stopping the production line

Support Mixed PCB inspection

Support mixed PCB and multi-in-1 board inspection by AI positioning algorithm

Centralized management by remote control

Centralized management of multiple production lines, remote control to save maintenance costs

SPC data analysis

Provide objective basis for process improvement, Recording to bad data in multiple aspects

Optional accessories

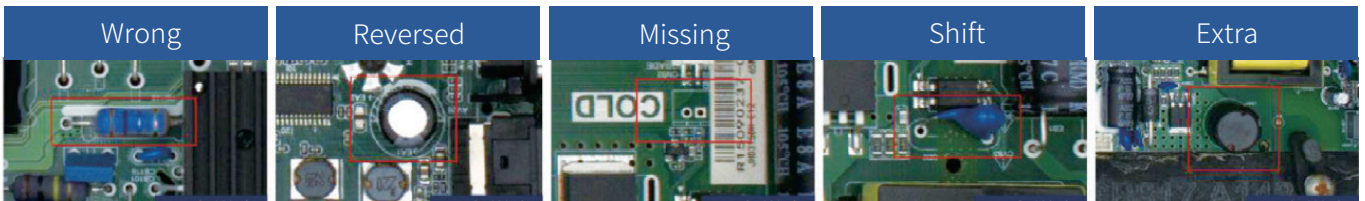


- o Automatic/manual control of production line start and pause, forward and reverse, ensure timely repair of defects



- o Quick locate position of NG board by LED lights to enhance repair efficiency

Detectable defects (Part of)



Specifications

Category	Item	AIS203-HW	AIS203P-HW
PCBA	Size	50*50~400*266mm	50*50~520*390mm
Optical specification	Camera	20MP, color	31MP, color
	Light source	Hightlight LED Open flat light+High Intensity Low Angle Light	
	FOV	400*266mm	520*390mm
	Resolution ratio	75um	80um
Inspection-related	Components	Missing, Reversed, Offset, Broken, Extra, Foreignmaterial, Dirty, etc.	
	Other function	NG tracking bar(optional), Control box(optional), Mixed material inspection, Panel inspection.	
	Mixing boards inspection	Support calling program automatically	
	Algorithm	CNN, Color contrast, Template matching, OCR, etc.	
Software	Operating system	Ubuntu 18.04 LTS 64bit	
	Function	Remote control, Remote assistance, CAD file import and user-defined model training	
	Communication method	Standard SMEMA interface	
	Data output	Autogenerated statistic analysis SPC	
	Special function	Automatic search of elements and quick programming	
Hardware	Industrial control host	CPU: intel i5 Display card: NVIDIA GTX1050Ti Memory: 16G DDR4, 256G SSD+2T Mechanical Hard Disk Network: 1000M Wired Network Card	CPU: intel i7 Display card: NVIDIA GTX1050Ti Memory: 24G DDR4, 256G SSD+2T Mechanical Hard Disk Network: 1000M Wired Network Card
	Display	23.8 inch FHD display	
Appearance /electric	Dimension and weight	(L*H*W) 715* (1315-1700) * (790-1210) mm, Net weight:100Kg	
	Power supply and power	AC 220V, rated power 200W	
	Air source	0.4-0.6Mpa	
	Work environment	Temperature: 10~45°C. Humidity: 30~85%RH	

*Specifications in this brochure are subject to final quotation.